



Our Know-how – Your Advantage

- Weight reduction up to
 - » 35 % compared to standard TPS
 - » 30 % compared to TPV
 - » 50 % compared to PVC
- Adhesion to polyolefinic materials (e.g. PP, TPV, TPS) in injection molding and coextrusion (LW/UV Series)
- Excellent compression set
- Reduced shrinkage and warpage of parts
- Closed and uniform surface structure
- Matted surface
- Black grades available directly; natural grades available on short notice
- Coloring after consultation on individual requirements possible
- Applications in various industries

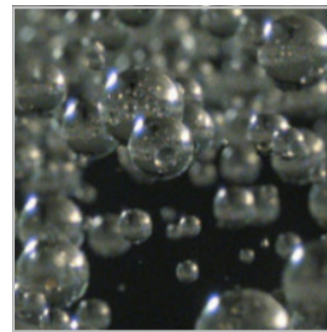
Karin Maier

Application Specialist

“In the industry sector, our weight-reduced lightweight TPEs impress with their exceptionally good compression set. In addition, all the advantages of the functional integration of a hard-soft composite as well as production in 2-component injection molding with polyolefins or polyamides can be used.”

Typical Applications

- Personal protective equipment
- Wall ducts
- Handles and overmoldings
- Joint tapes
- E-Bike- and E-Scooter-Seals
- Seals



Technical Data

		TL60WG-BLCK	TL60CW-BLCK	TL6NGG-BLCK
Hardness	Sh A	60	65	60
Density	g/cm ³	0.72	0.73	0.72
Tensile strength	MPa	2.7	3.0	2.6
Elongation at break	%	250	250	250
Tear resistance	N/mm	10.5	10.0	11.5
Compression set				
72h / 23°C	%	14	12	15
24h / 70°C	%	24	17	40
24h / 100°C	%	-	28	-
Adhesion to		PP, TPS, TPV	PP, TPS, TPV	PA6, PA6.6

TALK TO OUR EXPERTS!

KRAIBURG TPE GMBH & CO. KG - EUROPE, MIDDLE EAST, AFRICA

✉ Lightweight@kraiburg-tpe.com

KRAIBURG TPE TECHNOLOGY (M) SDN. BHD. - ASIA PACIFIC

✉ Lightweight@kraiburg-tpe.com

KRAIBURG TPE CORPORATION - AMERICAS

✉ Lightweight@kraiburg-tpe.com